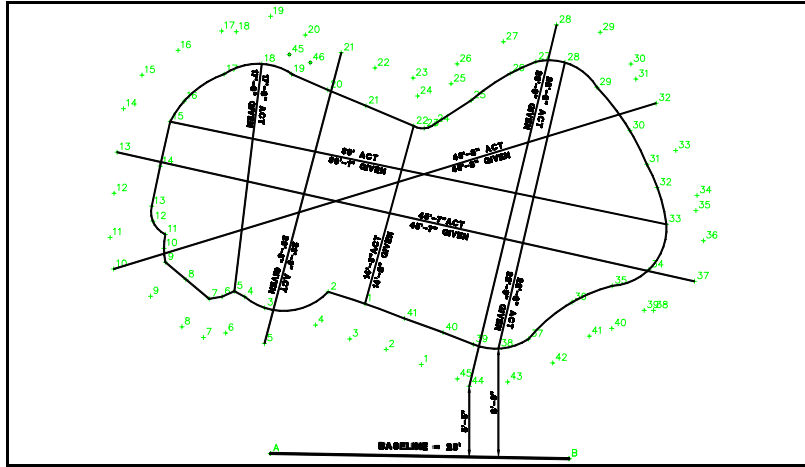


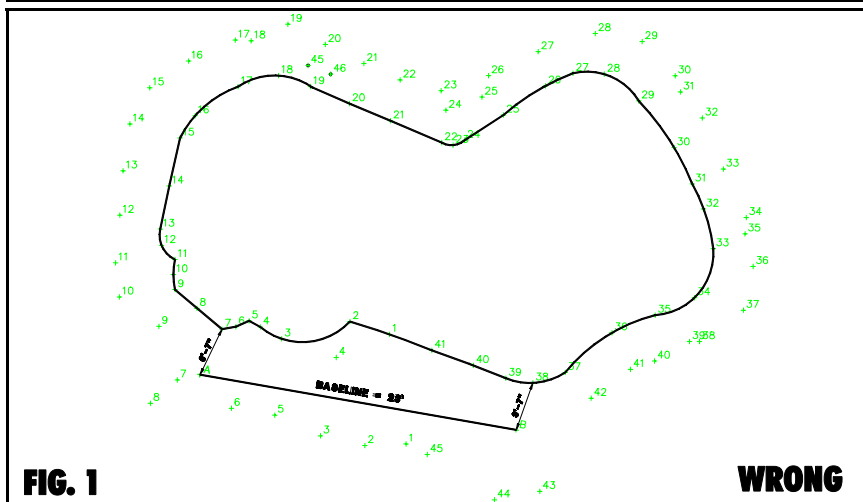
LOOP-LOC, LTD.

GUIDE TO MEASURING REPLACEMENT COVERS

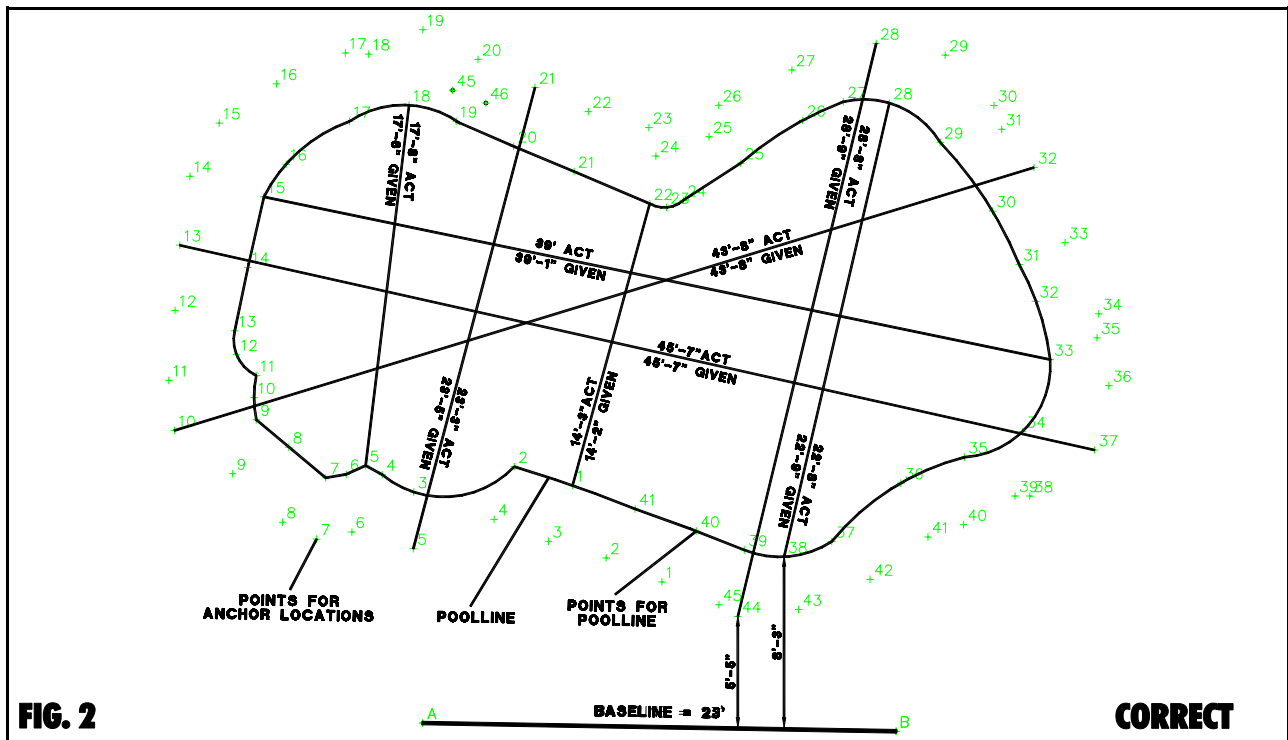


Measuring for a REPLACEMENT cover should be done with an AB measurement. This is the most accurate way to provide us the correct anchor placements. Two sets of measurements should be given USING THE SAME EXACT BASELINE; one set for the actual pool-line, and one set for the existing anchors. A common mistake when taking AB measurements with replacements is placing the baseline within 3' FROM ANY GIVEN POINT. If you look at FIG. 1 below you'll see that this baseline is placed 3' from the pool-line, but is not 3' back from the points showing the anchor locations. This will cause the anchor plot to be inaccurate. Always be sure to use one common baseline for both sets of points, and place your AB line at least three feet back from ANY POINT taken.

Also, always be sure to take cross dimensions. Provide at least 4 cross dimensions for each set of points taken. These dimensions are critical for verifying the plot's accuracy. See FIG. 2 on the following page for an example.



Always be sure to place the baseline at least three feet from any point taken on your measurement. In FIG. 1, the base line is too close to the anchor location points. This causes a few of the anchor locations to be inaccurate. If this happens your order/estimate would be placed on hold until new measurements arrive.



If you look above at FIG. 2 you will see that the baseline is in an optimal position. The baseline is more than 3' from any point given in the measurement. There are also cross dimensions to ensure that the measurements given are correct.

AB measurements may not be necessary if we are given the original LOOP-LOC order number. This would be a tremendous help for you and the homeowner since we would have the original plans for the cover. If you or the homeowner cannot locate an old LOOP-LOC order number or the cover was made by another manufacturer, you may send the old cover to LOOP-LOC for duplication.

**If you have any questions about how to measure Replacements or any other concerns,
Please contact our Customer Service Department
1-800-LOC-LOOP
IN NY CALL 631-582-2626**

**LOOP - LOC LTD.
390 MOTOR PARKWAY
HAUPPAUGE, NY 11788
WWW.LOOPLOC.COM
1-800-LOC-LOOP**